

LAKOTA WALDORF SCHOOL



Campaign for
CAMPUS EXPANSION

BUILDING A HOME FOR INDIGENOUS WALDORF EDUCATION
IN THE HEART OF THE PINE RIDGE RESERVATION





Our Indigenous Waldorf Mission

Founded in 1993 by members of the Oglala Sioux Tribe, the Lakota Waldorf School (LWS) is the only Waldorf School in North America located on an Indian Reservation.

Our mission is to provide a Waldorf Education integrated with a Lakota language and culture program for children (Grade K-8) living on the Pine Ridge Indian Reservation – one of the poorest Indian Reservations in the country.

While helping students to develop the academic, social, and practical resources to meet the challenges of today's world, our educational programs work to reinforce a strong cultural identity and foundation for Lakota language fluency. (The Lakota language, a dialect of Sioux, is classified by UNESCO as vulnerable to extinction.)

The philosophy and methods of Waldorf are closely aligned with how indigenous children learn through the rhythms of nature, song, storytelling, dramatic plays, and community celebration. Most importantly, it supports oral language learning – the foundation to preserving the culture and identity of indigenous people.

Our vision is that LWS students will go forward into life empowered to create a positive future for themselves, their communities, and beyond.

Front Cover Photo: Grand Entry at the Lakota Waldorf School Pow Wow 2019.

Introduction TO THE LAKOTA WALDORF SCHOOL **CAMPAIGN FOR CAMPUS EXPANSION**

Pilámaya (Thank you) for your interest in the Lakota Waldorf School Campaign for Campus Expansion, which has raised \$922,830 towards its \$2,154,530 goal.

The purpose of the campaign is to build a home for our indigenous Waldorf mission – a home that provides a safe, energy-efficient, economically sustainable, and enriching learning environment for our educational and cultural goals.

To reach our inspiring but challenging fundraising goal, we developed the LWS Campus Master Plan – a multi-year, multi-staged project as shown below with the following campaign phases and corresponding stages of construction.

PHASE 1 - COMPLETE

THE CLASSROOMS (West Wing)

Phase 1A: Completed February 2018

Phase 1B: Completed December 2019



PHASE 2 - PENDING

THE ADMINISTRATION & COMMUNITY AREAS (Central Area & East Wing)

Phase 2A: FOUNDATION

Phase 2B: EXTERIOR

Phase 2C: INTERIOR



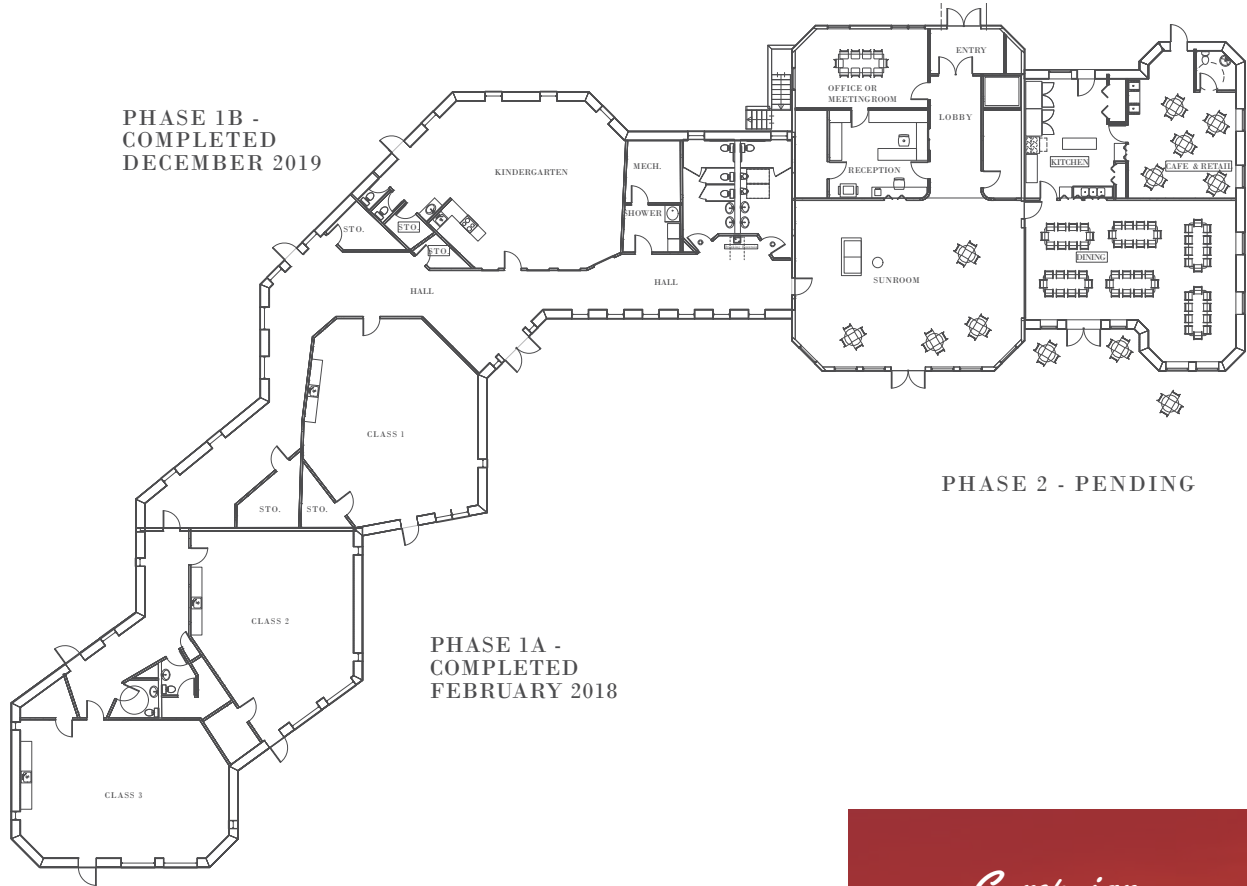
**AS OF SEPTEMBER 1, 2020, WE ARE PROUD TO SHARE OUR
FUNDRAISING PROGRESS:**



TOTAL CAMPAIGN GOAL	\$2,154,530
GIFTS RECEIVED (PHASE 1, COMPLETED)	– \$922,830
REMAINING GOAL (PHASE 2, PENDING)	\$1,231,700

Please join us in building a home for our indigenous Waldorf school by making a gift!

Overview
LWS CAMPUS MASTER PLAN
PHASE 1 & 2: BRINGING OUR HOME INTO REALITY



Campus Architect & Design

The architect of the Lakota Waldorf School Master Plan is Jeff Dickinson, Principal of Energy & Sustainable Design, Inc. and President of Biospaces, Inc., Carbondale CO.

Jeff has been a practitioner of Sustainable Architectural Design Alternatives for 30 years. His client list includes the Waldorf School on the Roaring Fork Eco-Campus, Water's Edge Waldorf School, Corvallis Waldorf School, Shepherd Valley Waldorf School, and Peace Valley Waldorf School.

The LWS Master Plan utilizes the latest, most cost-effective green construction methods and non-toxic materials, including straw bales, passive cooling, passive solar heating, photovoltaic solar panels, radiant heating, and rainwater catchment.

Campaign
LEADERSHIP

The Campaign and Master Plan for Campus Expansion is overseen by the LWS Board of Directors and Isabel Stadnick, the Campaign Coordinator and LWS Administrator.

The Oglala Sioux Tribal Council, the governing body of the tribe, has also endorsed this initiative.

PHASE 1 – COMPLETE

CONSTRUCTION PROJECT: CLASSROOMS (*West Wing*)

SIZE: 3,379 SQ. FT

ACTUAL COST: \$922,830

TIMELINE

Phase 1A: Completed February 2018

Phase 1B: Completed December 2019

MAIN FEATURES

Combined Classrooms (4)

Bathrooms (5)

Small Kitchen

Utility Room

Shower and Laundry Room

Long Classroom Corridor with Windows

Campus Grounds with Age-Appropriate Playground Equipment, Ceremonial Tipis, and Pow-Wow Area

PLUS: Building Permits, Architectural Design, Engineering, Surveys, Site Development, Septic, and Utilities

PHASE 2 – PENDING

CONSTRUCTION PROJECT: ADMINISTRATION & COMMUNITY AREAS (*Central Area & East Wing*)

SIZE: 8,151 SQ. FT.

ESTIMATED COST: \$1,231,700 (*For details, please see the campaign budget provided in this booklet.*)

TIMELINE: CAMPUS CONSTRUCTION – TBD

Phase 2A: FOUNDATION: Includes Site Work, Utility Stubs, Mechanical Ends (\$350,000)

Phase 2B: EXTERIOR: Includes Framing, Material Package, Finishes, Windows, Doors (\$450,000)

Phase 2C: INTERIOR: Includes Dry Wall, Insulation, Painting, Finishes, Mill Work, Mechanical (\$431,700)

MAIN FEATURES

Reception Area and Administrative Offices

Faculty Work Area and Meeting Rooms

The Sunroom (A large assembly hall with a library alcove)

School Cafeteria (with stage area and sliding doors that open to the Sunroom)

Commercial-Grade Kitchen

Community Café-Sandwich Shop and Public Retail Area

Basement Tornado Shelter, Storage, and Additional Infrastructure

Campus Landscaping, Sidewalks, Parking Lot, and Additional Playground Area

Phase 2

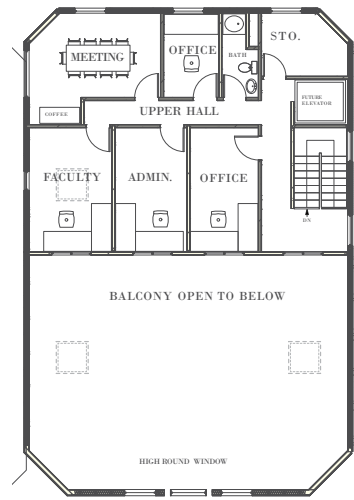
LWS CAMPUS MASTER PLAN

THE NEEDS IT WILL MEET, THE BENEFITS IT WILL BRING

First and foremost, campaign support for Phase 2 of the LWS Master Plan will enable LWS to serve an additional 20 students a year – increasing our enrollment capacity from 60 to 80 children.

Phase 2 will also significantly increase our capacity to serve and support our students, teachers, staff, and community in at least 10 other ways, as included with the architectural drawings below.

UPPER LEVEL (1,232 SF)



ADMINISTRATIVE OFFICES

LWS staff will have their own offices with dedicated space to support the school's growing administrative and development needs.

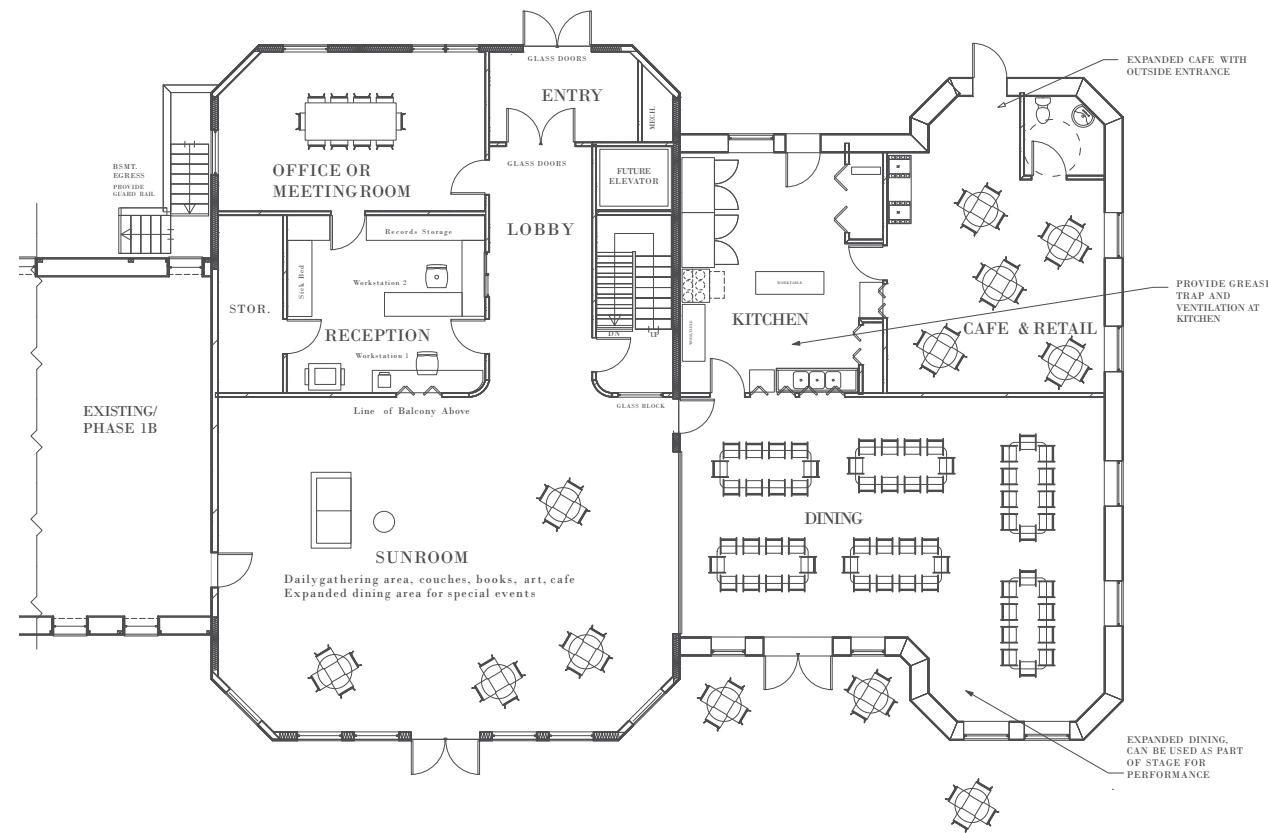
FACULTY WORK AREAS

For the first time, our teachers will have work and meeting spaces at the school to prepare lesson plans, develop programs, conduct parent-teacher conferences, hold faculty meetings, and store school supplies.

SUNROOM

The school's main entrance and lobby will lead into a beautiful, spacious, and versatile reception area called the Sunroom. Through a collapsible wall partition, the Sunroom can be combined with the bordering multi-purpose dining area to provide the much-needed space for community gatherings, student performances, school exhibits, family meetings, and more.

MAIN LEVEL (4,433 SF)



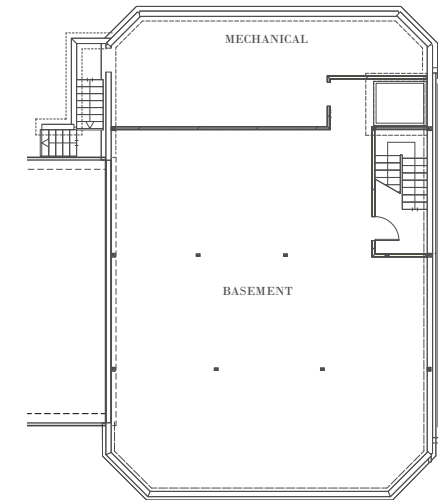
MULTI-PURPOSE DINING AREA

Seating 60-80 people, the cafeteria will provide a significant change from the current dining area in the old kindergarten house, which cannot hold all our students. Also, this new dining area will include collapsible tables and mobile stage platforms. These items can be easily moved when this space is combined with the Sunroom to accommodate large gatherings.

KITCHEN

A commercial-grade kitchen will replace the current one, which is small and challenges our ability to produce meals for school and community events. Also, the new kitchen will allow students to more easily engage in meal preparation and vegetable storage processing, which are part of our School Garden and Healthy Meal Program.

LOWER LEVEL (2,486 SF)



The lower level will serve as a **STORAGE ROOM** as well as a **TORNADO SHELTER**, which is an important safety feature against the extreme weather conditions of southern South Dakota.

CAMPUS GROUNDS (NOT ILLUSTRATED)

Plan B for campus expansion includes a BASKETBALL COURT and additional PLAYGROUND EQUIPMENT that will encourage students to exercise and enjoy the outdoors.

COMMUNITY CAFÉ & RETAIL AREA

These two areas will provide a space for social and community engagement and the opportunity to provide an additional income stream for LWS and local artists and vendors.

Phase 2 **CAMPAIGN BUDGET** (AS OF SEPTEMBER 1, 2020)

CONSTRUCTION EXPENSES	AMOUNT
A. Building Construction: Includes Materials, Labor, and Building Permits	\$1,065,820
B. Architectural & Engineering Services: Includes Architect, Structural Engineer, Mechanical Engineer, Surveyor, Geo Technician	\$32,000
C. Site Development: Includes Site Grading, Septic, Water, Utilities Parking Area, and Sidewalks	\$27,000
D. Fixtures, Furniture & Equipment: Includes Cafeteria Tables and Chairs, Office Desks and Files, Library Shelving, Retail and Coffee Shop Equipment and Furniture	\$56,880
E. Commercial-Grade Kitchen	\$50,000
TOTAL	\$1,231,700

PHASE 2: SQUARE FOOTAGE COSTS

Upper Level \$140/square ft; Main Floor \$140/square ft; Lower Level \$110/square ft.

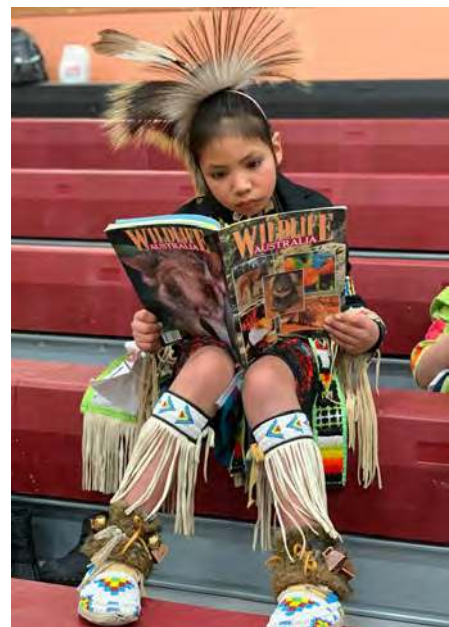


About **THE PINE RIDGE RESERVATION**

The Oglala Lakota (or the Oglala Sioux Tribe – OST) is a federally recognized tribe and one of the seven bands or sub-tribes of the Lakota Oyate, also known as Teton. The Oglala Lakota are part of the Oceti Sakowij (the Seven Council Fires) and live mostly on the Pine Ridge Reservation in South Dakota. The reservation is 3,468.85 square miles (or 8,984.3 km2) – one of the largest in the United States.

The Lakota Waldorf School is located in the heart of the Pine Ridge Indian Reservation. It is also part of Oglala Lakota County, South Dakota – one of the poorest of counties in the United States. Here are just a few facts about this county taken from state and federal government data sources:

- ◆ 80% of the county’s population is unemployed
- ◆ 53.9% of residents live below the federal poverty line
- ◆ Infant mortality is 3.4 times the national average
- ◆ Life expectancy is the lowest age of all U.S. counties
- ◆ The county’s suicide rate is the 4th highest in the U.S.



Why **YOUR GIFT IS IMPORTANT**

To complete Phase 2 of our campus plan, we need to raise \$1,231,700 – a goal that is both inspiring and challenging! We are inspired by the many needs and benefits that the completed campus will bring to our students, teachers, staff, and community. (For details, please see the Phase 2 Architectural Drawings.). But we are also challenged by the size of this fundraising goal for the Lakota Waldorf School (LWS) is not only a small, independent school that does not receive state or federal funding. We are also a tuition-free school.

Why is LWS tuition-free? Because we serve children from the Oglala Lakota County of South Dakota, where 53.9% of the residents live below the poverty line – one of the highest poverty rates of any county in the country.

Also, LWS is located in the heart of the Pine Ridge Indian Reservation – one of the poorest of tribal lands in the United States. Here, poverty is deeply rooted, and issues of unemployment, inadequate housing, domestic violence, alcoholism, drug abuse, malnutrition, depression, and more harshly impact Lakota children's lives.

As a result, LWS is unlike most Waldorf schools, which largely depend on tuition fees to cover most of their operating budget. Instead, we fund our educational programs with foundation grants (75%) and charitable gifts (25%). Therefore, we need the financial support of individuals like you to:

- ◆ Increase the number of students we can serve from 60 to 80;
- ◆ Give our teachers a dedicated space for lesson planning and parent-teacher conferences;
- ◆ Furnish the school with a commercial-grade kitchen large enough to prepare daily breakfast and lunch meals – the primary source of nutrition for most of our students; and
- ◆ Provide adequate space for cafeteria meals, student performances, artistic and cultural activities, community events, and more.

Also, your campaign gift will allow LWS to grow as a source of inspiration and support for social renewal to the people of the Pine Ridge Reservation and other Native American tribes across the country. The school not only provides children, Grades K-8, with a Waldorf Education that is enlivening the Lakota language and culture. We also reach beyond the classroom with educational activities for the community on critical issues related to the physical health and emotional well-being of children and the future of the Lakota people.

To date, we have received \$922,830 of our \$2,154,530 goal, which has allowed us to complete the 3,379 square foot west wing of the building – the first phase of our plan for campus expansion. But to provide a complete home for indigenous Waldorf education, we still need to raise \$1,231,700 for Phase 2A: FOUNDATION (\$350,000), Phase 2B: EXTERIOR (\$450,000), and Phase 2C: INTERIOR (\$431,700).

Therefore, we ask for your *wacante'ognaka* – the Lakota word for generosity and one of the four Lakota cultural values. It refers to the sharing of material goods or giving of financial support that comes from the heart and brings comfort, compassion, and kindness.

On behalf of our Lakota children and families, *pilaunyayapi* (we thank you all) ahead for your heartfelt generosity. With your support, LWS will provide a learning environment for empowering Lakota children to create a positive future for themselves, their communities, and beyond.

Ways of **GIVING**

The Lakota Waldorf School accepts campaign gifts and two-year pledges made via check, credit card, and gifts of securities. To make a two-year pledge, please complete the enclosed Campaign Gift & Pledge Form.

The IRS recognizes Lakota Waldorf School as a 501(c)(3) tax-exempt organization; EIN 36-3957237. All charitable gifts are tax-deductible to the fullest extent provided by the law.

GIFTS BY CHECK

Please make your check payable to "Lakota Waldorf School" and designate your gift to the **Campaign for Campus Expansion**.

MAIL TO

Lakota Waldorf School
Pine Ridge Indian Reservation
Three Mile Creek Road
P.O. Box 527
Kyle, South Dakota 57752

CREDIT CARD GIFTS

To make a credit card gift online, please visit www.lakotawaldorfschool.org. Find the "WAYS TO GIVE" menu and select the "DONATE" page. Please designate your gift to the **Campaign for Campus Expansion**.

GIFTS OF STOCK

Gifts of appreciated securities provide immediate tax benefits and avoid capital gains tax. To make a gift of stock, please contact Isabel Stadnick (as shown below).

FOR CAMPAIGN QUESTIONS, PLEASE CONTACT

Isabel Stadnick, Campaign Director & LWS Administrator
Office Phone: (605) 455-2487
Cell: (605) 454-8133
info@lakotawaldorfschool.org

Cante etan wopila tanka unnic'upi.
(We thank you greatly from our hearts.)





“Storytelling, artistic projects, nature activities, mealtime traditions, playtime, and hands-on learning opportunities – It is remarkable to see how the philosophy and methods of Waldorf Education are intrinsically aligned with these fundamental teaching practices of indigenous people.”

– **Caroline Stadnick**, LWS Resource Teacher & Counselor

About WALDORF EDUCATION

Waldorf Education, established by Dr. Rudolf Steiner in 1919, is a worldwide independent alternative educational movement with 1,025 independent Waldorf schools, 2,000 Waldorf kindergartens, and 530 centers for special education located in 60 countries.

Based on the power of an age-appropriate pedagogy, Waldorf Education fosters the development of:

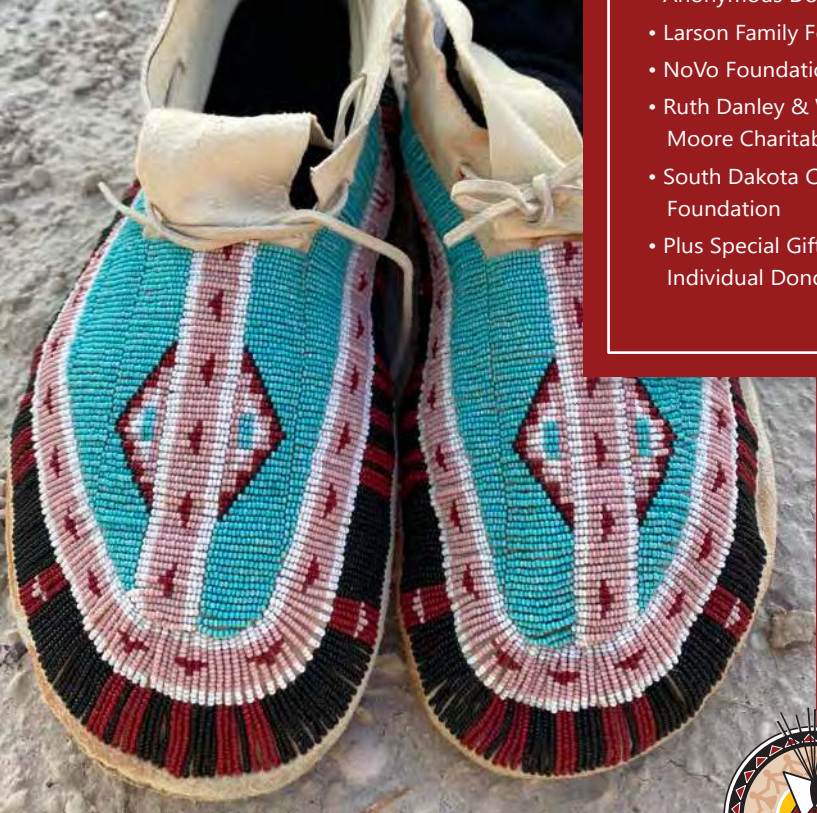
- ◆ Solid Academic Skills
- ◆ Strong Cognitive Ability
- ◆ Curiosity, Imagination, Creativity
- ◆ Wholesome Self-Confidence
- ◆ Healthy Social Relationships
- ◆ An Awe-Inspired Connection to Nature
- ◆ A Life-Long Love of Learning



Campaign
PHASE 1 DONORS

LWS is deeply grateful to the following donors who made the construction of the West Wing of our school possible:

- Anonymous Donors (2)
- Larson Family Foundation
- NoVo Foundation
- Ruth Danley & William Enoch Moore Charitable Trust
- South Dakota Community Foundation
- Plus Special Gifts from Individual Donors



Lakota Waldorf School

Pine Ridge Indian Reservation

Three Mile Creek Road • P.O. Box 527 • Kyle, South Dakota 57752
(605) 455-2487 • info@lakotawaldorfschool.org • www.lakotawaldorfschool.org